

Beirut Arab University • Faculty of Pharmacy

Beirut Campus

Tel: +961 1 300110

Fax: +961 1 818402

Tripoli Campus

Tel: +961 6 218400

Fax: +961 6 222800

Debbieh Campus

Tel: +961 7 985858

Fax: +961 7 985060

Bekaa Campus

Tel: +961 8 542051

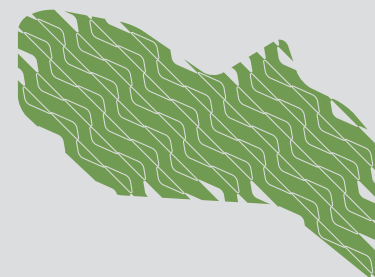
Fax: +961 8 544051

bau@bau.edu.lb - www.bau.edu.lb

Issued during the academic year 2016 - 2017



جامعة بيروت العربية
BEIRUT ARAB UNIVERSITY



the guide
faculty of
Pharmacy

Vision Innovation Continuity

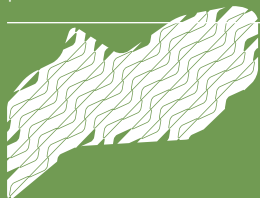
Faculty of Pharmacy



Dean's Message \

The Faculty of Pharmacy was established in 1986. It offers high quality programs at the undergraduate and graduate levels. Moreover, the Faculty endeavours to achieve excellence in pharmacy education, research, and practice. Thus, we continuously revise our curriculum to meet national and international benchmarks and to maintain accreditation from the Canadian Council for Accreditation of Pharmacy Programs (CCAPP).

The undergraduate curriculum integrates knowledge in pharmaceutical sciences and applied skills in the clinical sciences along with practices in experiential programs. This uniquely designed hybrid curriculum sets the Faculty apart from its peers while meeting advancements in healthcare systems and the pharmacy profession. Therefore, our graduates are competent pharmacists who are able to pursue a wide range of local, regional, and international career opportunities in community and hospital pharmacies, pharmaceutical industries, academia and research institutions.



Faculty Guide
Dean's Message
page. 2



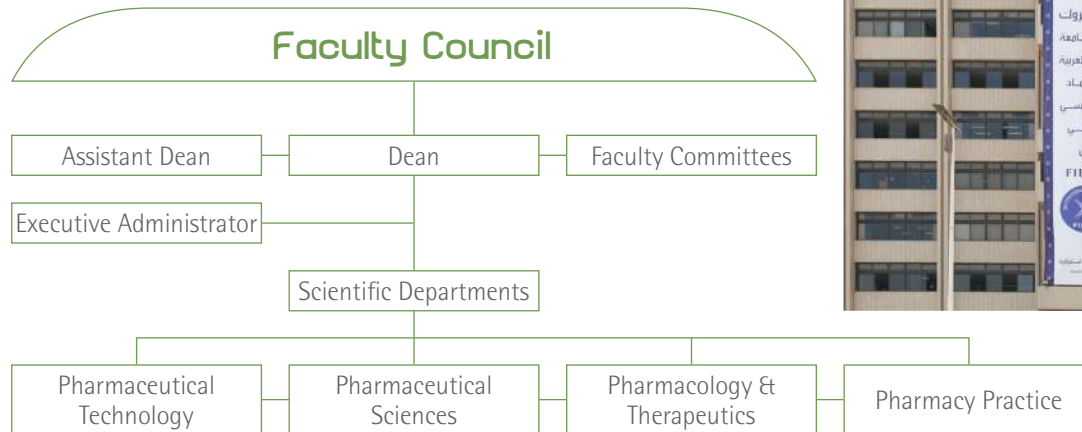
Prof. Abdalla El-Lakany
Dean of
Faculty of Pharmacy

Organizational Structure \

Faculty Guide
Organizational Structure
page. 3

The Faculty of Pharmacy consists of different areas of specialties: Pharmaceutical Technology, Pharmaceutical Sciences, Pharmacology & Therapeutics, and Pharmacy Practice.

The Organizational Chart of the Faculty is as follows:



Academic Degrees \ Investing in the Future

Faculty Guide
Academic Degrees
page. 4



The Faculty of Pharmacy offers:

Bachelor Degree in Pharmacy

Doctor of Pharmacy (Pharm.D)

Master's Degree in

- Pharmaceutical Analytical Chemistry & Quality Control
- Pharmaceutical Chemistry

- Pharmacognosy & Medicinal Plants
- Pharmaceutics & Industrial Pharmacy
- Pharmacology , Toxicology & Biochemistry
- Pharmaceutical Microbiology

Doctor of Philosophy (PhD) Degree in

- Pharmaceutical Analytical Chemistry & Quality Control
 - Pharmaceutical Chemistry
 - Pharmacognosy & Medicinal Plants
 - Pharmaceutics & Industrial Pharmacy
 - Pharmacology , Toxicology & Biochemistry
 - Pharmaceutical Microbiology
-

Undergraduate Programs \ Making a Smart Choice

Faculty	-	Bachelor	
		Total Credit Hours	Min No. of Years
Pharmacy	-	180	5



Admission Requirements

To be accepted for an Undergraduate Degree, applicants must:

- Hold the official Lebanese Secondary School Certificate in a branch relevant to the chosen undergraduate field of specialization or an official equivalent degree;
- Successfully pass an Entrance Exam that measures the level of Proficiency in English Language and an Aptitude Test (Thinking Skills, Scientific Knowledge: Biology, Physics, and Chemistry);
- Attend a Personal Interview.

Graduation Requirements

To receive the Bachelor Degree, a student must complete 180 credit hours with an overall minimum Cumulative Grade Point Average (CGPA) of 2.0 + complete successfully the International Computer Driving License (ICDL). The following table summarizes the number of credit hours required for completing the Bachelor program at the Faculty:

Faculty Guide
Undergraduate Programs
page. 6

Program	University Requirements		Faculty Requirements		Total Credit Hours
	Mandatory Courses	Elective Courses	Major Mandatory Courses (162 Credit Hours)	Major Elective Courses	
PHAR	5	7	Biomedical Sciences Courses: 24 Crs. Pharmaceutical Sciences Courses: 69 Crs. Pharmacy Practice Courses: 41 Crs. Pharmacy Practice Experience: 28 Crs.	6	180

PHAR: Pharmacy

Career Opportunities

Community Pharmacies

Hospital Pharmacies

Clinical Pharmacy Settings

Pharmaceutical Companies

Regulatory Affairs

Clinical Research Centers

Drug Information Centers

Academia



Graduate Programs \

Admission Requirements

Doctor of Pharmacy (Pharm.D)

Applicants to PharmD must hold a Bachelor Degree with a minimum CGPA of 2.33.

Master's Degree

Applicants to a Master's Degree must hold a Bachelor Degree with a minimum CGPA of 2.33.

PhD Degree

Applicants to a PhD Degree must hold a Master's Degree from BAU with a minimum CGPA of 3.00.

Graduation Requirements

Doctor of Pharmacy (Pharm. D)

Master's Degree

The student has to successfully complete the required credit hours of the courses with a CGPA of no less than 2.33 and successfully defend the thesis in no less than two years from the date of registration in the program.

PhD Degree

The student should successfully complete the required credit hours with a CGPA of no less than 3.00 in the course-work for the credit hour system and

Faculty Guide

Graduate Programs

page. 7

should successfully defend the dissertation in a period no less than three years from the date of registration in the program.

CGPA of 2.33 and 3.00 are equivalent to 73% and 80% respectively for the academic year system.



Programs & Degrees \

Faculty Guide
Programs & Degrees
 page. 8

Program	Doctor of Pharmacy		Master		PhD	
	Total Credit Hours	Min No. of Years	Total Credit Hours	Min No. of Years	Total Credit Hours	Min No. of Years
Pharm D. (PHAR.D.1)	30	1	-	-	-	-
Pharm D. (PHAR.D.2)	38	2	-	-	-	-
Pharmaceutical Sciences	-	-	36	2	-	-
Pharmaceutical Sciences	-	-	-	-	40	3

Academic Policy \ Supporting Your Steps

The Academic Policy helps students understand their rights and responsibilities and successfully complete all required academic tasks.

Academic Advising

Academic Advising is a shared responsibility; it entails a dynamic relationship between the advisor and the student. The advisors are committed to help students make a successful transition to the university and develop an appropriate academic plan. Advising is available to all students before the registration process to assist them in choosing a major, selecting courses, and completing all graduation requirements.

Code of Ethics

The Code of Ethics is designed to establish an environment of honor and trust within the University. BAU's Code of Ethics aims at promoting the growth of ethically responsible students through adherence to the highest standards of academic integrity, ethics, and morals.

Faculty Guide
Academic Policy
page. 9



Learning Facilities \ Inspiring Your Learning

Faculty Guide
Learning Facilities
page. 10

The Faculty comprises a number of academic facilities that are open to students:

Library

The Faculty of Pharmacy Library supports all the programs. Its collection consists of (900) Books and (9000) E-books, (20) Multimedia, (55) Theses and Dissertations. In addition to AccessPharmacy, Micromedex, Scifinder Databases.

Drug Quality Control (DQC) Lab

The Faculty continues to provide the service of drugs and pharmaceutical analysis and validation before they enter into the Lebanese market. This service is provided by the "Drug Analysis" unit at the Faculty which is certified by the Lebanese Ministry of Health and works under the supervision of the University's Consultation Center.

Pharmacy Practice Lab

It is a multipurpose laboratory facility, with videotaping and presentation technology throughout. It features a pharmacy with four workstations and a classroom area. Pharmacy students learn patient care provision, drug dispensing, drug information and patient counseling techniques. Prominent display cabinets house contemporary drug product inventory. The Lab is also used to teach communication skills, prescription processing and the proper techniques for administration of medication.



Animal House

An Animal house facility is located at the 12th floor in Hariri Building. It is made of durable material and has adequate space to facilitate free movement of personnel and animals. Temperature, humidity, ventilation, and lighting are controlled to meet the biological needs of the animals. Absorbent bedding is removed and replaced as often as necessary to keep the animals clean and dry. The Faculty animal house supplies laboratory animals to support research in different faculties and universities in Lebanon.

Continuing Education

The Faculty offers continuing education for the Lebanese pharmacists in collaboration with the Lebanese Order of Pharmacists.

Computer Lab

A Computer Lab has been established at the Faculty, and it encompasses 15 computers with simulation programs for experiments that are conducted in the different scientific departments. Students have also been trained in some parts of the Pharmacology course of the fourth level. Students from different levels can also use these computers to conduct an internet search and to accomplish their assignments. Students from other faculties in the Medical Group have free access to use these computers when available.

Faculty Guide

Learning Facilities

page. 11



University Facilities and Services

All registered students have access to University facilities:

Health Care

- Medical Clinic
- Dental Clinic
- Nutrition and Dietetics Clinic
- Physical Therapy Clinic
- Psychological Clinic

Technology Services

- Portal (iConnect)
- Webmail
- Phone and Mail Services
- Campus Wi-Fi
- ATM

Dorms (Debbieh Campus)

Cafeterias

Debbieh Astronomical Observatory

Transportation and Parking

Legal Clinic

Cultural Campaigns

Teams & Clubs

(Beirut Campus)

Teams

Basketball (Male), Basketball (Female), Football, Futsal, Volleyball (Male), Volleyball (Female), Handball (Male), Archery, Chess, Muay Thai, Table Tennis, Swimming.

Clubs

Drama, Music, Folk Dance, Zumba, Scouts, Lebanese Red Cross Youth Center-BAU.

(Debbieh Campus)

Teams

Basketball (Male), Basketball (Female), Football (Male), Futsal (Male), Volleyball, Handball (Male), Chess, Table Tennis, Kick Boxing, Body Building, Tennis, Astronomy, Wrestling (Male), Athletics, Badminton.

Clubs

Drama, Music, Zumba, Scouts, Dance.

(Tripoli Campus)

Teams

Basketball (Male) ,Basketball (Female), Football (Male), Volleyball (Male)
Volleyball (Female), Table Tennis (Male), Kick Boxing (Male), Body Building,
Cardio, Aerobics.

Clubs

Drama, Music, Arts, Dance, Social, TEDx, Entrepreneur, Environmental, and
Adventure.



Faculty Contacts

Hanadi Jazi

Executive Administrator

(Phone) +961 1 300110

(Ext) 2389

(Email) pharmacy@bau.edu.lb



