

Beirut Arab University • Faculty of Health Sciences

Beirut Campus

Tel: +961 1 300110

Fax: +961 1 818402

Tripoli Campus

Tel: +961 6 218400

Fax: +961 6 222800

Debbieh Campus

Tel: +961 7 985858

Fax: +961 7 985060

Bekaa Campus

Tel: +961 8 542051

Fax: +961 8 544051

bau@bau.edu.lb - www.bau.edu.lb

Issued during the academic year 2016 - 2017



جامعة بيروت العربية
BEIRUT ARAB UNIVERSITY



the guide faculty of Health Sciences

Vision Innovation Continuity

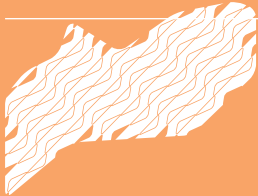
Faculty of Health Sciences



Dean's Message \

The Faculty of Health Sciences was established in 2005 with the nursing curriculum and was expanded in two years with three additional Programs: Nutrition and Dietetics, Medical Laboratory Technology, and Physical therapy to meet the rising needs for professionals specialized in health-related sciences. These programs are designed to provide you with an opportunity to learn and hone required professional skills and competencies while at the same time gaining an understanding of multiple factors that determine a person's health. Our Faculty is devoted to advancing knowledge through scholarship, research, and evidence-based practice. As such, we are committed to educate our students to serve the community with competent and compassionate patient care and with servant leadership.

The Faculty of Health Sciences continues to strive for national recognition and prominence for all our programs. Hence, The World Confederation for Physical Therapy (WCPT) recently accredited the Bachelor of Physical Therapy Program.



Faculty Guide
Dean's Message
page. 2



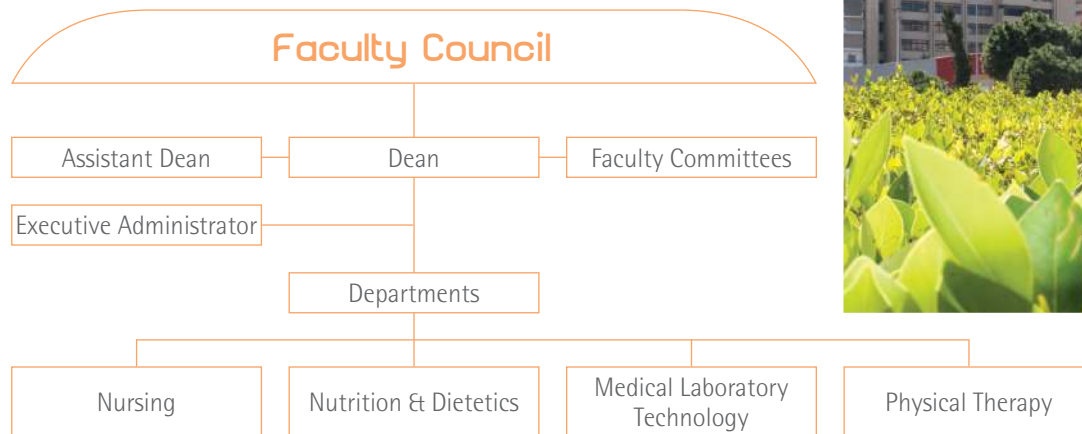
Prof. Rajaa Fakhoury
Dean of
Faculty of Health Sciences

Organizational Structure \

Faculty Guide
Organizational Structure
page. 3

The Faculty of Health Sciences consists of different areas of specialties: Nursing, Nutrition & Dietetics, Medical Lab Technology, and Physical Therapy.

The Organizational Chart of the Faculty is as follows:



Academic Degrees \ Investing in the Future

Faculty Guide
Academic Degrees
page. 4

The Faculty of Health Sciences offers:

Bachelor Degree in

- Nursing
- Nutrition & Dietetics
- Medical Laboratory Technology
- Physical Therapy

Master of Science Degree (MSc) in Nursing

- Medical Surgical Nursing
- Critical Care Nursing

Master in Infection, Prevention, & Control

Doctor of Physical Therapy (DPT)



Undergraduate Programs \ Making a Smart Choice

Faculty Guide
Undergraduate Programs
page. 5

Faculty	Program	Bachelor	
		Total Credit Hours	Min No. of Years
Health Sciences	Nursing	106	3
	Nutrition & Dietetics	101	3
	Medical Laboratory Technology	100	3
	Physical Therapy	130	4



Admission Requirements

To be accepted for an Undergraduate Degree, applicants must:

- Hold the official Lebanese Secondary School Certificate in a branch relevant to the chosen undergraduate field of specialization or an official equivalent;
- Successfully pass an Entrance Exam to measure the level of proficiency in **English Language an Aptitude Test** (Thinking Skills, Scientific Knowledge: Biology, Chemistry & Physics);
- **Attend a Personal Interview.**

Graduation Requirements

To receive a Bachelor Degree, a student must satisfactorily complete the credit hours required for each bachelor granting program at the Faculty and get an overall minimum Cumulative Grade Point Average (CGPA) of 2.0 + International Computer Driving License (ICDL).

The following table summarizes the number of credit hours required for each Bachelor-granting program at the Faculty:

Faculty Guide
Undergraduate Programs
page. 6

Program	University Requirements		Program Requirements		Total Credit Hours
	Mandatory Courses	Elective Courses	Major Core Courses	Free & Major Elective Courses	
NURS	7	9	84	6	106
NUTR	7	9	79	6	101
MELS	7	9	75	9	100
PHTH	7	9	105	9	130

NURS: Nursing
PHTH: Physical Therapy

NUTR: Nutrition & Dietetics

MELS: Medical Laboratory Technology

Career Opportunities

Nursing

- Hospitals
- Homecare Centers
- Community, & Primary Health - Care Centers
- Schools, & Day Care Centers
- Industries & Occupational Health Clinics
- Elderly Home
- National & International Health Organizations

Nutrition & Dietetics

- Ministry of Health
- Private Hospitals
- Private Clinics
- Food Industry
- Food Service Institutions
- Research Labs
- Biotechnology Firms
- Schools & Nutrition Counselors in Various Institutions, Government Agencies, & Pharmaceutical Companies

Medical Laboratory Technology

- Hospital Laboratories
- Outpatient Clinic Medical Laboratories
- Laboratory-Equipment Supplying Companies

Faculty Guide

Undergraduate Programs

page. 7

- Biomedical Research Centers
- Pharmaceutical Industries
- Blood Banks

Physical Therapy

- Outpatient Clinics
 - Hospitals
 - Rehabilitation Centers
 - Extended Care Facilities
 - Private Physical Therapy Sessions
 - Educational or Research Centers at Schools
 - Industrial Workplaces or other Occupational Environments
 - Fitness Centers & Sport Training Facilities
-



Graduate Programs \

Admission Requirements

Master's Degree

Applicants to a Master's Degree must hold a Bachelor Degree in Nursing obtained from the Faculty of Health Sciences at BAU or a recognized university with a minimum CGPA of 2.33 for credit hour system.

Doctor of Physical Therapy (DPT)

- The student must hold a Bachelor Degree in Physical Therapy from BAU or any equivalent.
- Applicants from other accredited institution:
 - Must fulfil the courses required for the BSc in Physical Therapy.
 - Must fulfil the courses (throughout his study) in a way to match with the program offered by BAU.
- The students must hold a License of practice from the Lebanese Ministry of Health (for Lebanese) or equivalent (for non-Lebanese);

Graduation Requirements

Master's Degree

The student has to successfully complete the required credit hours in the courses with a CGPA of no less than 2.33 and successfully defend the thesis in no less than two years from the date of registration in the program.

Faculty Guide

Graduate Programs

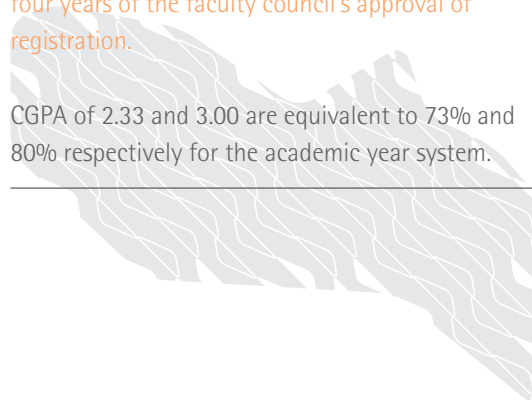
page. 8

Doctor of Physical Therapy (DPT)

The student must pass with a CGPA of no less than 3.00 the minimum number of credit hours of the curriculum after the approval of the Faculty Council for the registration in the program in a minimum period of two years.

The student will forfeit the program if he / she did not complete the program requirements within four years of the faculty council's approval of registration.

CGPA of 2.33 and 3.00 are equivalent to 73% and 80% respectively for the academic year system.



Programs & Degrees \

Faculty Guide
Programs & Degrees
 page. 9

Program

Nursing
 Physical Therapy
 Infection Control

DPT	
Total Credit Hours	Min No. of Years
-	-
38	2
-	-

Master	
Total Credit Hours	Min No. of Years
36	2
-	-
36	2

Academic Policy \ Supporting Your Steps

The Academic Policy helps students understand their rights and responsibilities and successfully complete all required academic tasks.

Academic Advising

Academic Advising is a shared responsibility; it entails a dynamic relationship between the advisor and the student. The advisors are committed to help students make a successful transition to the university and develop an appropriate academic plan. Advising is available to all students before the registration process to assist them in choosing a major, selecting courses, and completing all graduation requirements.

Code of Ethics

The Code of Ethics is designed to establish an environment of honor and trust within the University. BAU's Code of Ethics aims at promoting the growth of ethically responsible students through adherence to the highest standards of academic integrity, ethics, and morals.

Faculty Guide
Academic Policy
page. 10



Learning Facilities \ Inspiring Your Learning

Faculty Guide
Learning Facilities
page. 11

The Faculty comprises a number of academic facilities that are open to students:

Library

The Medical Library supports the Faculties of Pharmacy, Medicine, and Health Sciences. It consists of a considerable number of (1000) Books and (10000) E-books, (127) Multimedia, (12) Theses, Dissertations to access Physiotherapy, Nutrition Care Manual, Rehabilitation and Reference Center Full Text Databases.

Clinics & Laboratories

- Nursing Simulation Lab
- Biomedical Lab A
- Biomedical Lab B
- Nutrition & Dietetics Laboratory
- BAU Clinic for Nutritional & Weight Management
- Physical Therapy Outpatient Clinics



University Facilities and Services

All registered students have access to University facilities:

Health Care

- Medical Clinic
- Dental Clinic
- Psychological Clinic

Technology Services

- Portal (iConnect)
- Webmail
- Phone and Mail Services
- Campus Wi-Fi
- ATM

Dorms (Debbieh Campus)

Cafeterias

Debbieh Astronomical Observatory

Transportation and Parking

Legal Clinic

Cultural Campaigns

Teams & Clubs

(Beirut Campus)

Teams

Basketball (Male), Basketball (Female), Football, Futsal, Volleyball (Male), Volleyball (Female), Handball (Male), Archery, Chess, Muay Thai, Table Tennis, Swimming.

Clubs

Drama, Music, Folk Dance, Zumba, Scouts, Lebanese Red Cross Youth Center-BAU.

(Debbieh Campus)

Teams

Basketball (Male), Basketball (Female), Football (Male), Futsal (Male), Volleyball, Handball (Male), Chess, Table Tennis, Kick Boxing, Body Building, Tennis, Astronomy, Wrestling (Male), Athletics, Badminton.

Clubs

Drama, Music, Zumba, Scouts, Dance.

(Tripoli Campus)

Teams

Basketball (Male) ,Basketball (Female), Football (Male), Volleyball (Male)
Volleyball (Female), Table Tennis (Male), Kick Boxing (Male), Body Building,
Cardio, Aerobics.

Clubs

Drama, Music, Arts, Dance, Social, TEDx, Entrepreneur, Environmental, and
Adventure.



Faculty Contacts

Mariam Zeidan

Executive Administrator Beirut Campus

(Phone) +961 1 300110

(Ext) 2551

Joanna Shafik

Administrative Officer Tripoli Campus

(Phone) +961 6 218400

(Ext) 4042

(Email) healthsciences@bau.edu.lb



